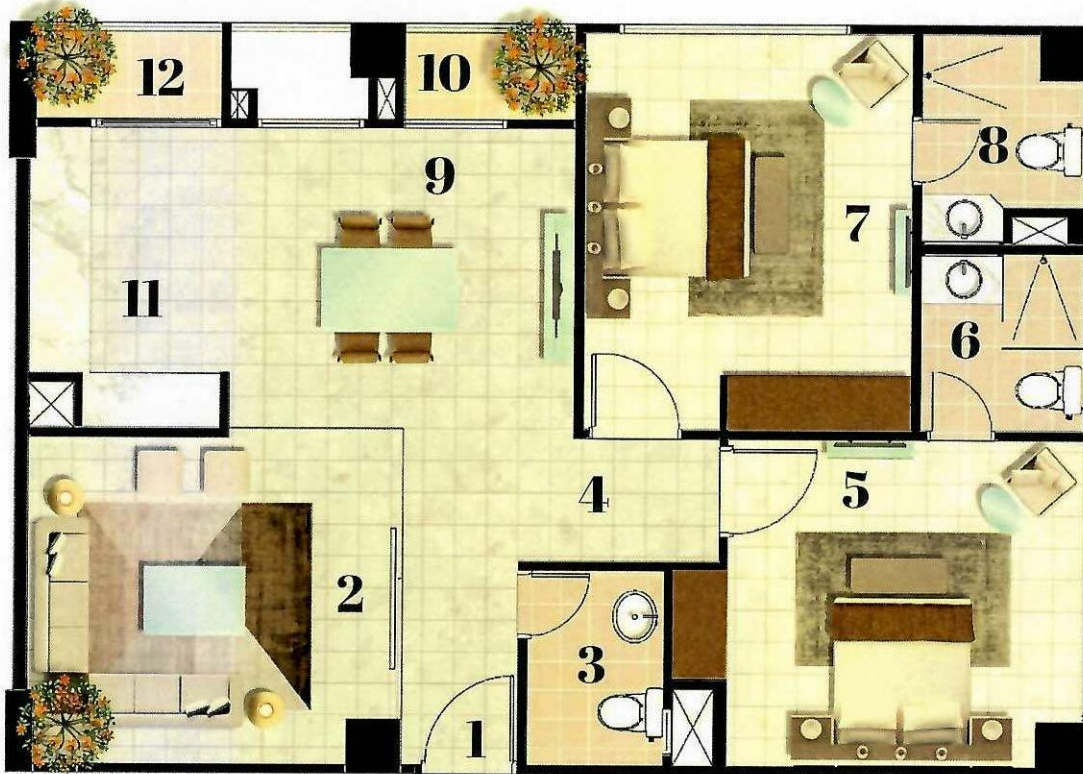


Apartment 01

2 Bed | Drawing + Lounge | 1,347 sqft



1- Entrance	4'-2" x 12'-3"
2- Drawing Room	12'-3" x 14'-0"
3- Powder Room	7'-4" x 5'-4"
4- Lobby	4'-4" x 7'-7"
5- Master Bedroom	12'-1" x 15'-5"
6- Bathroom 1	7'-4" x 6'-5"
7- Second Bedroom	14'-11" x 12'-2"
8- Bathroom 2	7'-5" x 6'-5"
9- Lounge	11'-2" x 13'-4"
10- Terrace 1	3'-6" x 6'-9"
11- Kitchen	11'-2" x 7'-3"
12- Terrace 2	3'-6" x 6'-9"
Gross Area	1,347 sqft

+ Designated Parking Bay: 128 sqft

Launch - Payment Plan

2 Bed | Drawing + Lounge | 1,347 sqft
5 Years Easy Installment Plan

Particulars	%	Amount
Booking	5%	875,550
Confirmation	5%	875,550
Allocation	5%	875,550
Allotment	5%	875,550
57 Monthly Installments	80% (245,768 X 57)	14,008,800
Total	100%	PKR 17,511,000

Feature Charges
Corner: 300,000/- Road Facing: 300,000/- West Open: 300,000/-

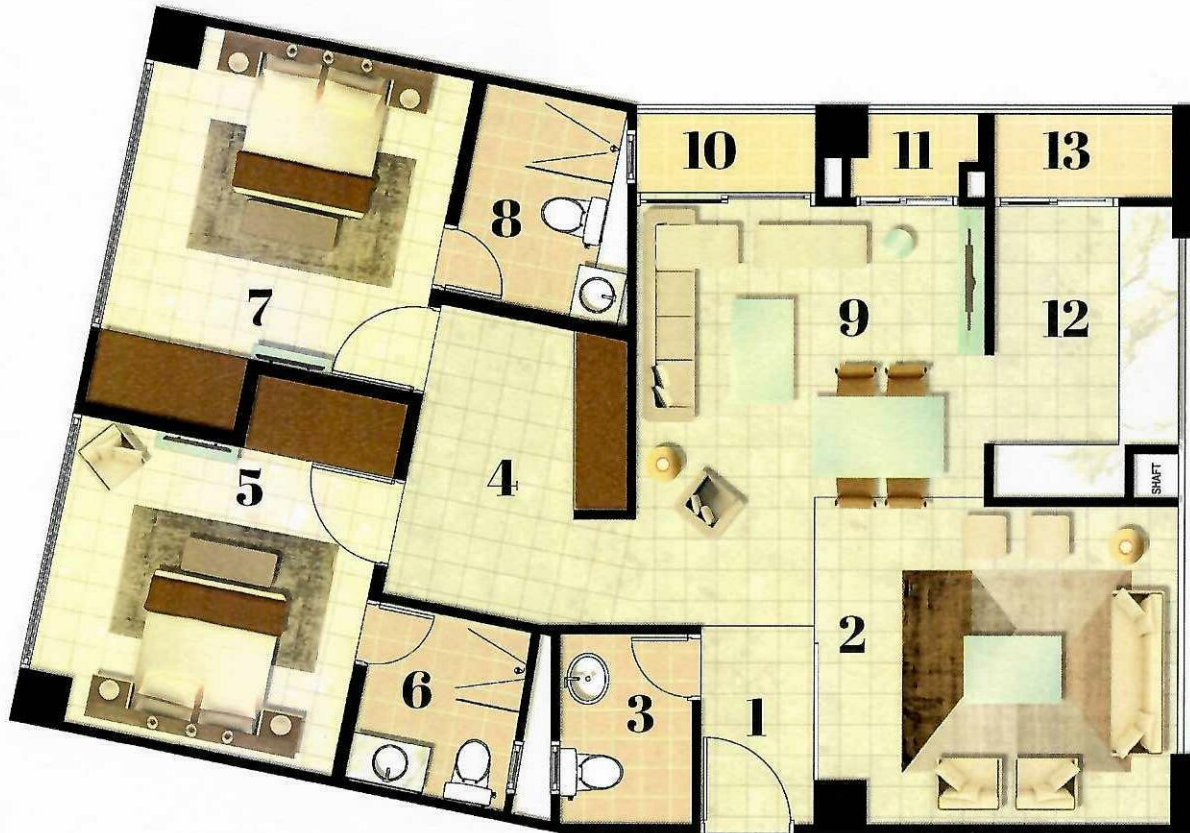
IMPORTANT NOTES:

1. Installments shall be payable in accordance with the agreed payment plan/schedule no later than the 10th day of each month.
2. Payments may be made online or through cheque/pay order only.
3. Booking and payments shall be deemed confirmed only upon issuance of the system-generated booking form and system generated payment receipt.
4. The unit price includes one dedicated parking space per apartment.
5. Payments will be made in favor of CDC-Trustee Silk Islamic Development REIT - Collection Account.



Apartment 02

2 Bed Premium | Drawing + Lounge
Study + Dual Terraces | 1,556 sqft



1- Entrance	12-6' × 4-5'
2- Drawing Room	12'-10' × 14'-0'
3- Powder Room	7-7' × 5-4'
4- Study	11'-6' × 8'-4'
5- Master Bedroom	13'-7' × 14'-5'
6- Bathroom 1	7'-3' × 6'-11'
7- Second Bedroom	13'-7' × 14'-5'
8- Bathroom 2	8'-5' × 5'-9'
9- Lounge	11'-6' × 13'-6'
10- Terrace 1	3'-2' × 7'-1'
11- Terrace 2	3'-2' × 7'-1"
12- Kitchen	11'-0' × 7'-0'
13- Service Terrace	3'-2' × 7'-5'
Gross Area	1,556 sqft

+ Designated Parking Bay: 128 sqft

Launch – Payment Plan

2 Bed Premium | Drawing + Lounge Study + Dual Terraces | 1,556 sqft
5 Years Easy Installment Plan

Particulars	%	Amount
Booking	5%	1,011,400
Confirmation	5%	1,011,400
Allocation	5%	1,011,400
Allotment	5%	1,011,400
57 Monthly Installments	80% (283,902 X 57)	16,182,400
Total	100%	PKR 20,228,000

Feature Charges

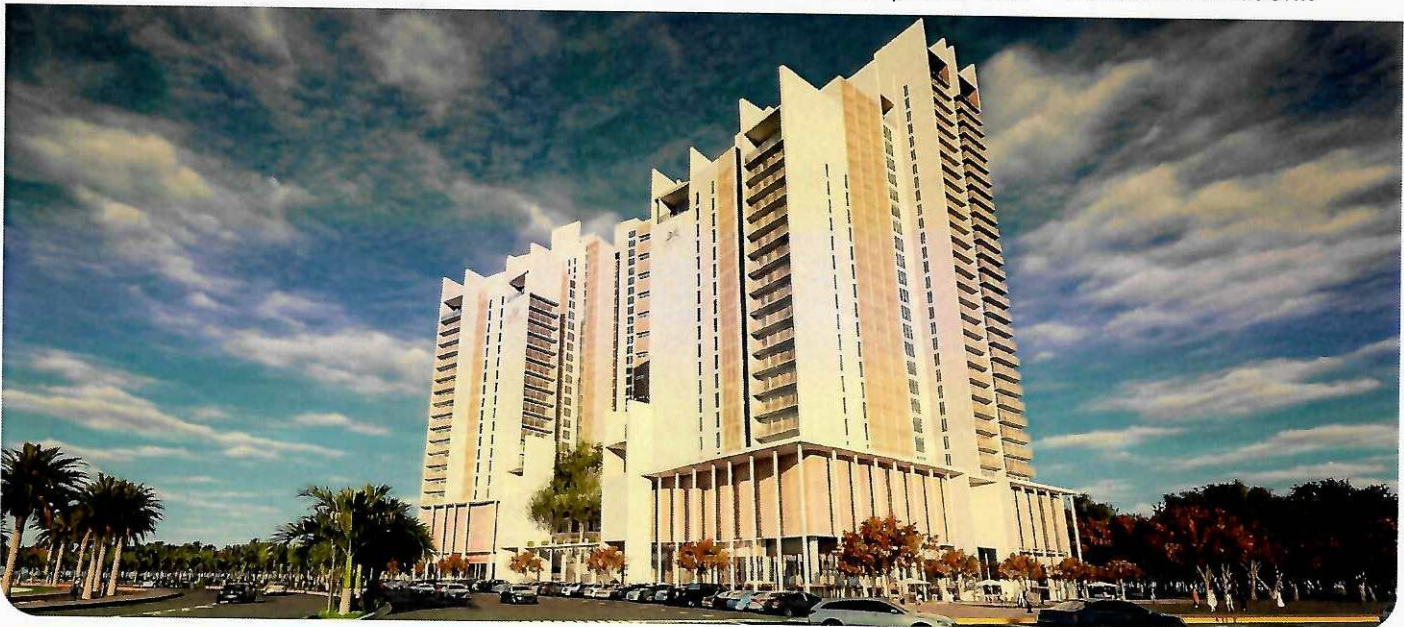
Corner: 300,000/-

Road Facing: 300,000/-

West Open: 300,000/-

IMPORTANT NOTES:

1. Installments shall be payable in accordance with the agreed payment plan/schedule no later than the 10th day of each month.
2. Payments may be made online or through cheque/pay order only.
3. Booking and payments shall be deemed confirmed only upon issuance of the system-generated booking form and system generated payment receipt.
4. The unit price includes one dedicated parking space per apartment.
5. Payments will be made in favor of CDC-Trustee Silk Islamic Development REIT - Collection Account.



Apartment 03

2 Bed Luxury | Drawing + Lounge
1,607 sqft



1- Entrance	5'-2" x 12'-7"
2- Drawing Room	12'-4" x 15'-1"
3- Powder Room	5'-4" x 7'-6"
4- Lobby	5'-3" x 9'-8"
5- Master Bedroom	20'-7" x 12'-7"
6- Bathroom 1	6'-5" x 7'-11"
7- Terrace 1	3'-2" x 8'-6"
8- Second Bedroom	15'-4" x 12'-4"
9- Bathroom 2	6'-5" x 8'-0"
10- Lounge	14'-5" x 12'-3"
11- Terrace 2	4'-6" x 6'-0"
12- Kitchen	6'-5" x 7'-11"
13- Service Terrace	3'-0" x 6'-10"
Gross Area	1,607 sqft

+ Designated Parking Bay: 128 sqft

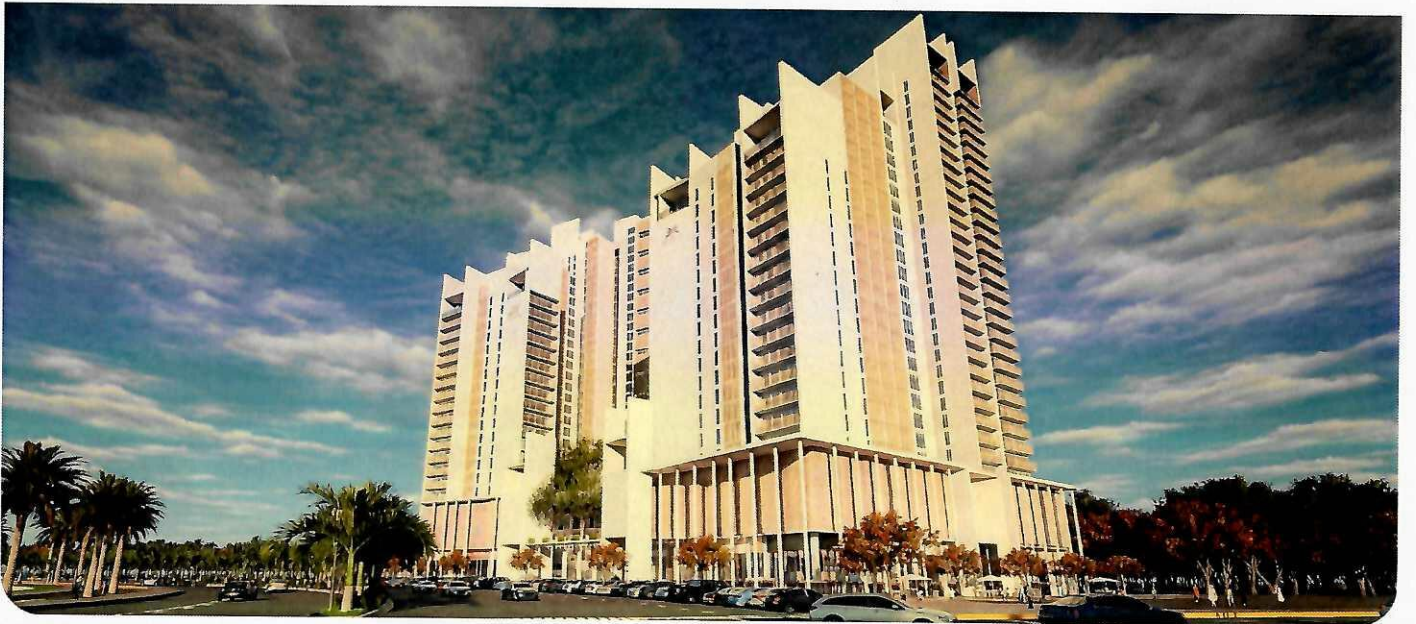
Launch – Payment Plan

2 Bed Luxury | Drawing + Lounge 1,607 sqft
5 Years Easy Installment Plan

Particulars	%		Amount
Booking	5%		1,044,550
Confirmation	5%		1,044,550
Allocation	5%		1,044,550
Allotment	5%		1,044,550
57 Monthly Installments	80%	(293,207 X 57)	16,712,800
Total	100%		PKR 20,891,000
Feature Charges			
Corner: 300,000/- Road Facing: 300,000/- West Open: 300,000/-			

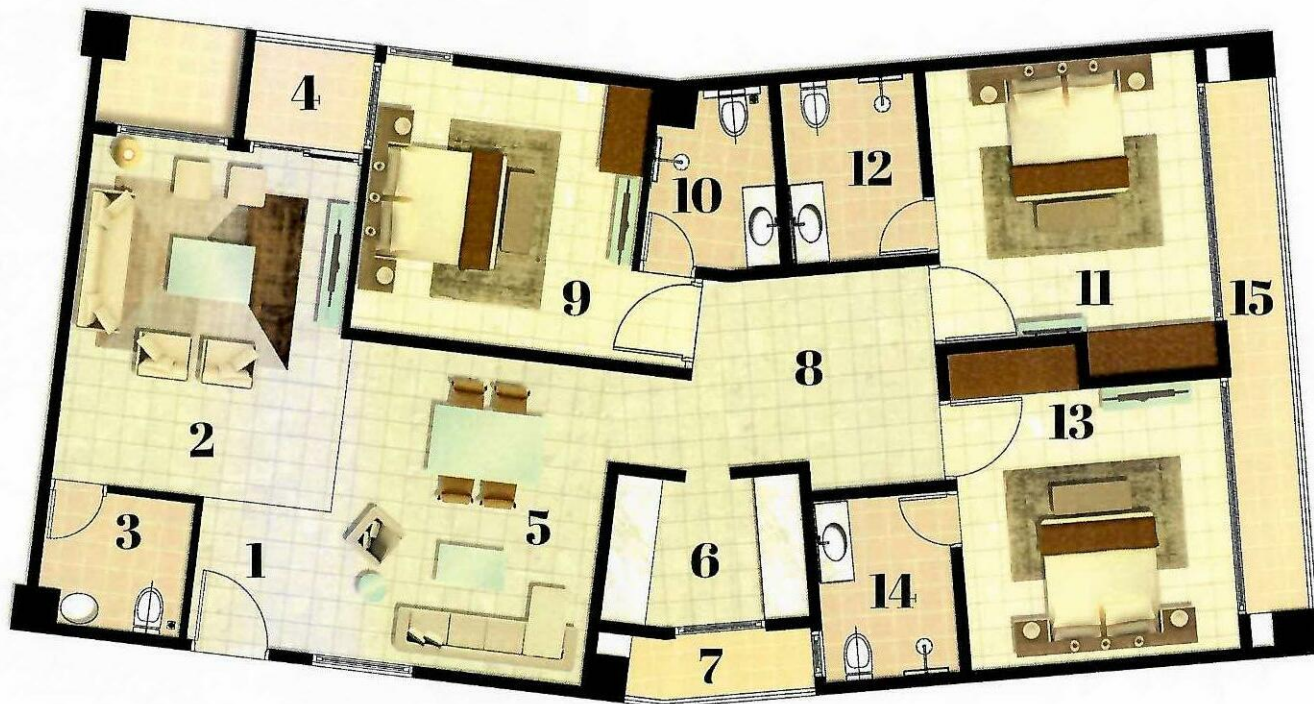
IMPORTANT NOTES:

1. Installments shall be payable in accordance with the agreed payment plan/schedule no later than the 10th day of each month.
2. Payments may be made online or through cheque/pay order only.
3. Booking and payments shall be deemed confirmed only upon issuance of the system-generated booking form and system generated payment receipt.
4. The unit price includes one dedicated parking space per apartment.
5. Payments will be made in favor of CDC-Trustee Silk Islamic Development REIT - Collection Account.



Apartment 04

3 Bed Premium | Drawing + Lounge
+ Study | 1,883 sqft



1- Entrance	6'-7" x 5'-4"
2- Drawing Room	15'-8" x 12'-2"
3- Powder Room	6'-5" x 6'-11"
4- Terrace	5'-0" x 6'-1"
5- Lounge	14'-5" x 12'-8"
6- Kitchen	10'-4" x 6'-10"
7- Service Terrace	3'-2" x 6'-10"
8- Study	10'-0" x 9'-10"
9- Third Bedroom	12'-5" x 12'-6"
10- Bathroom 3	8'-5" x 6'-4"
11- Second Bedroom	13'-5" x 12'-5"
12- Bathroom 2	8'-5" x 6'-4"
13- Master Bedroom	13'-5" x 12'-5"
14- Bathroom 1	8'-5" x 6'-4"
15- Balcony	27'-4" x 3'-3"
Gross Area	1,883 sqft

+ Designated Parking Bay: 128 sqft

Launch – Payment Plan

3 Bed Premium | Drawing + Lounge + Study | 1,883 sqft
5 Years Easy Installment Plan

Particulars	%	Amount
Booking	5%	1,223,950
Confirmation	5%	1,223,950
Allocation	5%	1,223,950
Allotment	5%	1,223,950
57 Monthly Installments	80%	(343,565 X 57) 19,583,200
Total	100%	PKR 24,479,000

Feature Charges

Corner: 300,000/-

Road Facing: 300,000/-

West Open: 300,000/-

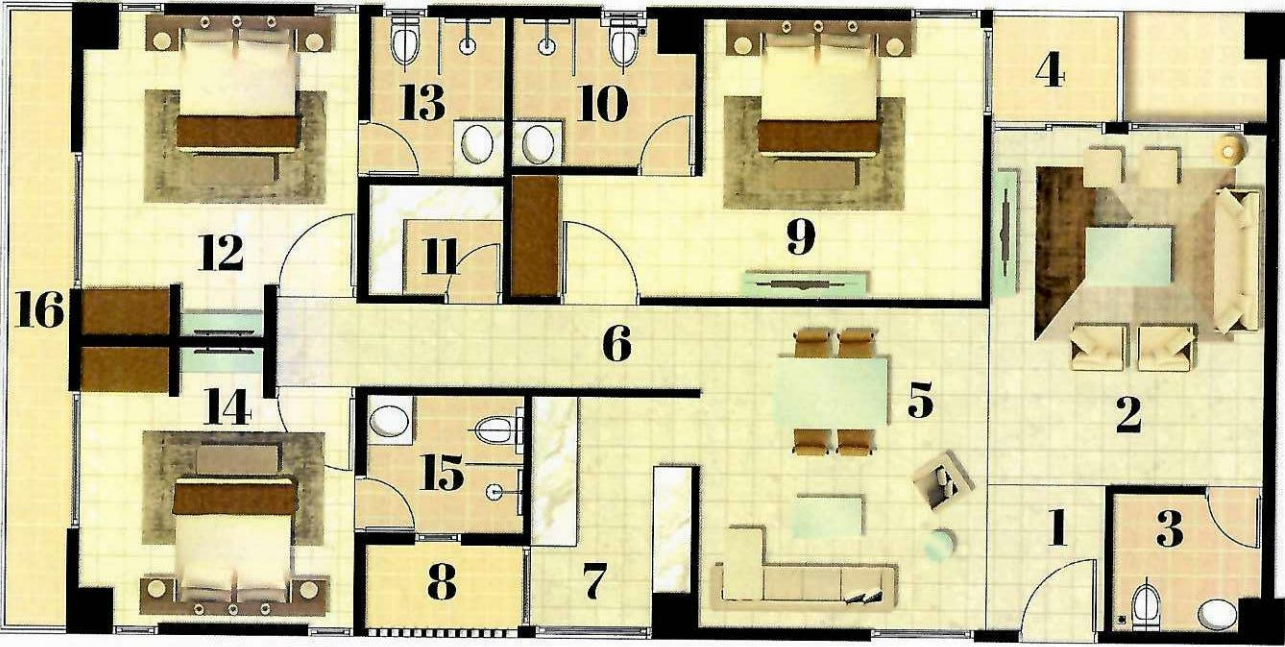
IMPORTANT NOTES:

1. Installments shall be payable in accordance with the agreed payment plan/schedule no later than the 10th day of each month.
2. Payments may be made online or through cheque/pay order only.
3. Booking and payments shall be deemed confirmed only upon issuance of the system-generated booking form and system generated payment receipt.
4. The unit price includes one dedicated parking space per apartment.
5. Payments will be made in favor of CDC-Trustee Silk Islamic Development REIT - Collection Account.



Apartment 05

3 Bed | Drawing + Lounge + Store
| 1,741 sqft



1- Entrance	6'-7' x 5'-4'
2- Drawing Room	15'-6' x 12'-5'
3- Powder Room	6'-5' x 6'-11'
4- Terrace	5'-0' x 5'-9'
5- Lounge	14'-5' x 12'-8'
6- Lobby	4'-0' x 18'-8"
7- Kitchen	10'-5' x 7'-4'
8- Service Terrace	4'-2' x 7'-2'
9- Second Bedroom	12'-5' x 12'-6'
10- Bathroom 2	6'-5' x 8'-4'
11- Store	5'-2' x 6'-2'
12- Master Bedroom	14'-5' x 12'-5'
13- Bathroom 1	7'-5' x 6'-2'
14- Third Bedroom	12'-5' x 12'-5'
15- Bathroom 3	6'-4' x 7'-2'
16- Balcony	27'-4' x 3'-3'
Gross Area	1,741 sqft

+ Designated Parking Bay: 128 sqft

Launch - Payment Plan

3 Bed | Drawing + Lounge + Store | 1,741 sqft
5 Years Easy Installment Plan

Particulars	%		Amount
Booking	5%		1,131,650
Confirmation	5%		1,131,650
Allocation	5%		1,131,650
Allotment	5%		1,131,650
57 Monthly Installments	80%	(317,656 X 57)	18,106,400
Total	100%		PKR 22,633,000
Feature Charges			
Corner: 300,000/- Road Facing: 300,000/- West Open: 300,000/-			

IMPORTANT NOTES:

1. Installments shall be payable in accordance with the agreed payment plan/schedule no later than the 10th day of each month.
2. Payments may be made online or through cheque/pay order only.
3. Booking and payments shall be deemed confirmed only upon issuance of the system-generated booking form and system generated payment receipt.
4. The unit price includes one dedicated parking space per apartment.
5. Payments will be made in favor of CDC-Trustee Silk Islamic Development REIT - Collection Account.

